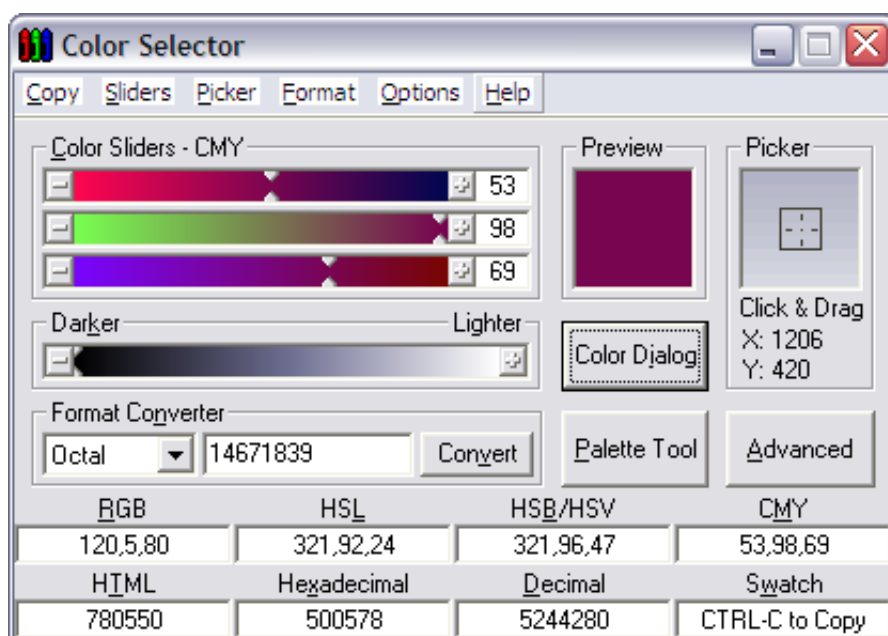




0-WEB.ru

[Hsl To Rgb Conversion Free Download For Mac](#)



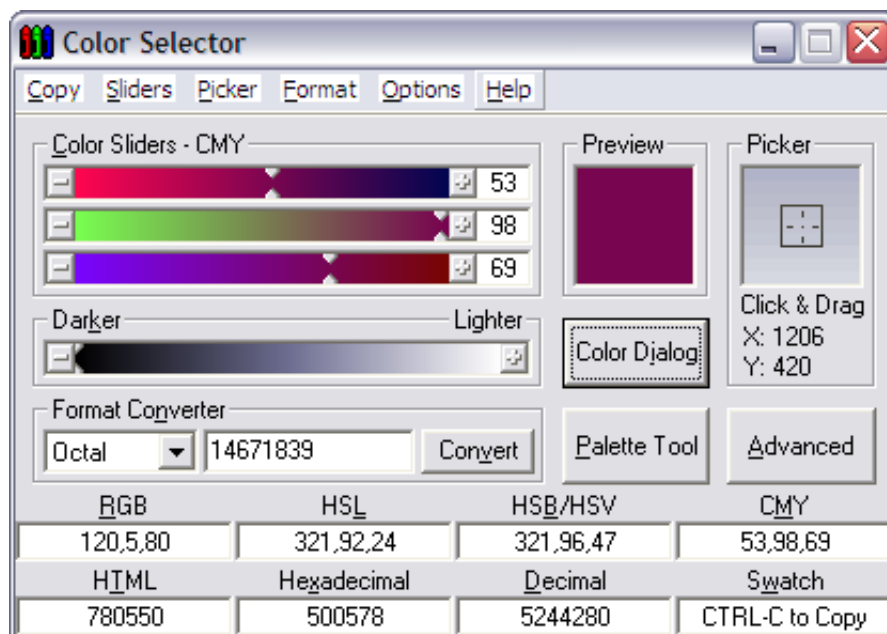


The RGB (Red, Green, Blue) color model is the most known, and the most used every day.. It defines a color space in terms of three components: • Red, which ranges from 0-255 • Green, which ranges from 0-255 • Blue, which ranges from 0-255 The RGB color model is an additive one.. 6% Lightness (L): 16 1% The color preview of the above HSL values can be visualized at the bottom panel of the converter.

Solution First, enter the RGB values (39, 26 and 56) in their respective text fields.. The color preview of the HSV result is indicated at the bottom platform of the calculator.. Conversion of HTML, HEX and RGB colour codes into the corresponding colours *Averaged colour sampling for easy handling of colour noise with 3x, 9x and 15x magnifier for greater precision.. I am looking for a tool or the algorithm to convert between HSL color to RGB It seems to me that HSL is not very widely used so I am not having much luck searching for a converter.

[How to know if your phone is unlocked without sim](#)

The conversion result of hue, saturation, and lightness will be displayed below the two controls.. Stack Overflow HSL to RGB color conversion [closed] Ask Question Up vote 145 down vote favorite. [Prepaid meter keygen torrent](#)



[Download Intel My Wifi Technology Driver](#)

[Descargar Teamviewer Gratis Para Mac](#)

The 'Reset' button is used when you want to perform new conversions from RGB to HSV Example Convert 39 red, 26 green and 56 blue color codes into HSL.. * Nine formats of colour codes: HTML, RGB, HEX, HSB/HSV, HSL, CMYK and their variations.. To use the calculator, enter the RGB hex code in the initial blank text field and then click the 'Convert' button.. RGB to HSL Conversion It is a color conversion calculator used to convert red, green and blue colors (RGB) to hue, saturation, and lightness (HSL). [Windows 7 64 Bit Activator.](#)

[Transformation Pack For Windows 10](#)

$R' = R/255$ $G' = G/255$ $B' = B/255$ $C_{max} = \max(R', G', B')$ $C_{min} = \min(R', G', B')$ $\Delta = C_{max} - C_{min}$ Hue Calculation $0^\circ \leq \Delta < 60^\circ$ $H = 60^\circ \times (G' - B') / \Delta \pmod{6}$, $60^\circ \leq \Delta < 120^\circ$ $H = 60^\circ \times (B' - R') / \Delta + 120$, $120^\circ \leq \Delta < 180^\circ$ $H = 60^\circ \times (R' - G') / \Delta + 240$, $180^\circ \leq \Delta < 240^\circ$ $H = 60^\circ \times (G' - B') / \Delta + 300$ Saturation calculation $S = \Delta / (C_{max} + C_{min})$ if $C_{min} > 0$ or $C_{max} < 1$ else $S = \Delta / C_{max}$ Lightness calculation $L = (C_{max} + C_{min}) / 2$. You can also enter the red, green and blue colors in their blank text fields respectively.. Formula for converting RGB to HSL To change the range from 0 to 255 into 0 to 1, the red, green and blue values are divided by 255.. Hue is expressed in degrees while saturation and lightness are often expressed as percentages.. In other words, Red, Green and Blue values (known as the three primary colors) are combined to reproduce other colors.. The hex code is designated by both letters and numbers and the RGB values range from 0 to 255.. Initiate the conversion by clicking the 'Convert' button The conversion result will be displayed as; Hue (H): 266 degrees Saturation (S): 36. 6e4e936fe3 [Alpema Standards Pdf](#)

6e4e936fe3

[Download Free Microsoft Office For Mac From Uf](#)